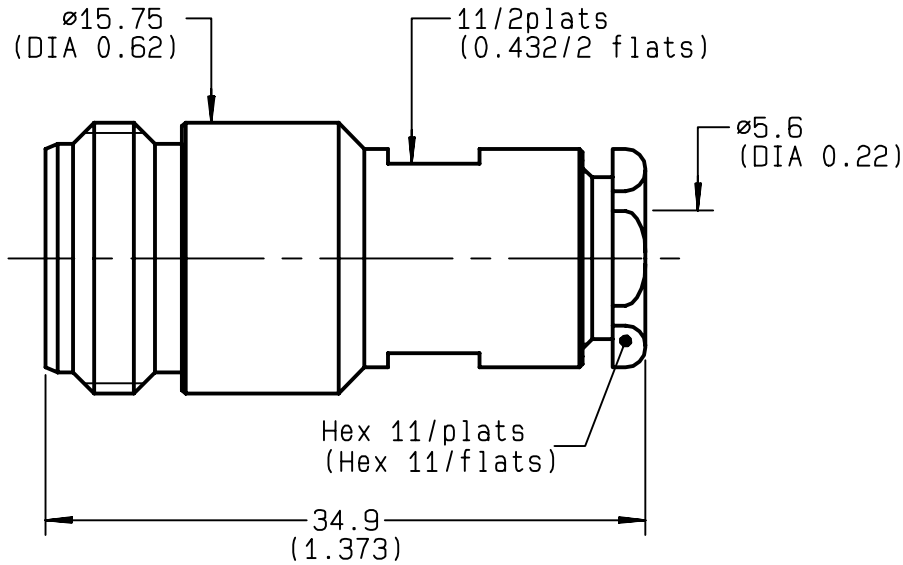


**STRAIGHT JACK CLAMP TYPE
CABLE 5/50 S+D - PACK. 50**

R161.206.161
SERIES N



NOMINAL IMPEDANCE	50 Ω	CABLES : KX 15 KX 23 RG 141 RG 142 RG 142 FTX RG 223 RG 400 RG 58	
FREQUENCY RANGE	0-11 GHz		
TEMPERATURE RATING	-55/+155 °C		
V.S.W.R	1.3 + x F(GHz)Maxi		
RF INSERTION LOSS	0.048 √F(GHz) dB Maxi		
VOLTAGE RATING	850 Veff Maxi		
DIELECTRIC WITHSTANDING VOLTAGE	1500 Veff Mini		
INSULATION RESISTANCE	5000 MΩMini		
HERMETIC SEAL	NA Atm.cm ³ /s		
LEAKAGE (pressurized only)	NA		
MECHANICAL DURABILITY	500 Cycles	OTHERS CHARACTERISTICS	
WEIGHT	gr		CABLE RETENTION 150 N Mini
SPECIFICATION			CENTER CONTACT RETENTION
			Axial force - mating end NA N Mini
			Axial force - opposite end 27 N Mini
		Torque NA cm.N Mini	
		RECOMMENDED TORQUES	
		Mating NA cm.N	
		Panel nut NA cm.N	
		Clamp nut 450 cm.N	

CONNECTOR PARTS	MATERIALS	FINISH	(all values are given in micrometers)
BODY	BRASS	BBR 2	
OUTER CONTACT	BRASS	BBR 2	
CENTER CONTACT	BRASS	GOLD 0.5 OVER NICKEL 2	
INSULATOR	PTFE	-	
GASKET	SILICONE RUBBER	-	
OTHERS PIECES	BRASS	BBR 2	

ISSUE	CREATION DATE	FILE PART-NUMBER
9714A00	04/04/1997	97-1200-007



ANNEQUIN

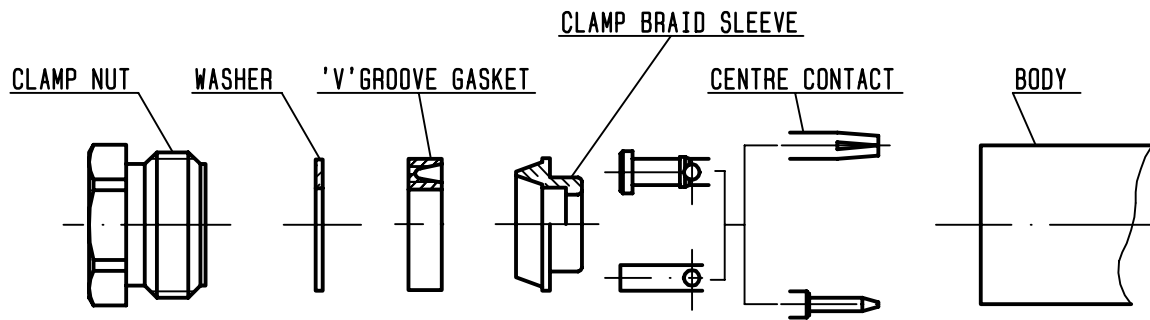
The information given here is subject to change without notice. Design changes may be in order to improve the product.

Connect to the future



R161.206.161

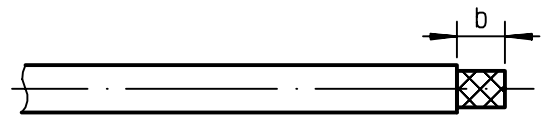
ISSUE **9714A00** SERIES **N**



①

Strip the cable .

-
-
-
-

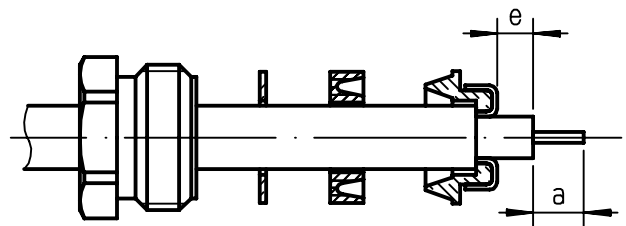


Stripping	a	b	c	d	e
inch	0.157	0.295	0	0	0.039
mm	4	7.5			1

②

Slide the clamp nut , the washer and the 'V'groove gasket onto the cable .
Slide clamp braid sleeve over braid .
Fold back braid and trim off surplus braid .
Trim back dielectric as shown .

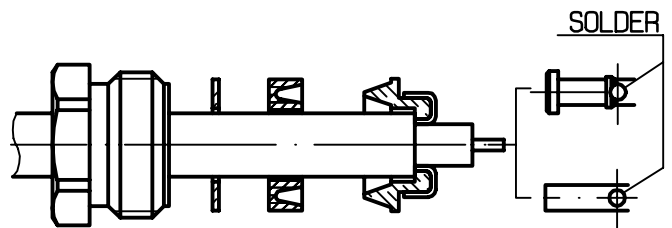
-



③

Solder the cable inner conductor into centre contact .

-
-



④

Screw sub-assembly into the connector body .
(recommended coupling torque 39.83 in.lb)

-
-

